

Oran Park Link Road



NSW GOVERNMENT
Department of Planning

Sydney's Growth Centres
www.gcc.nsw.gov.au

Special Infrastructure Contribution Offset Agreement

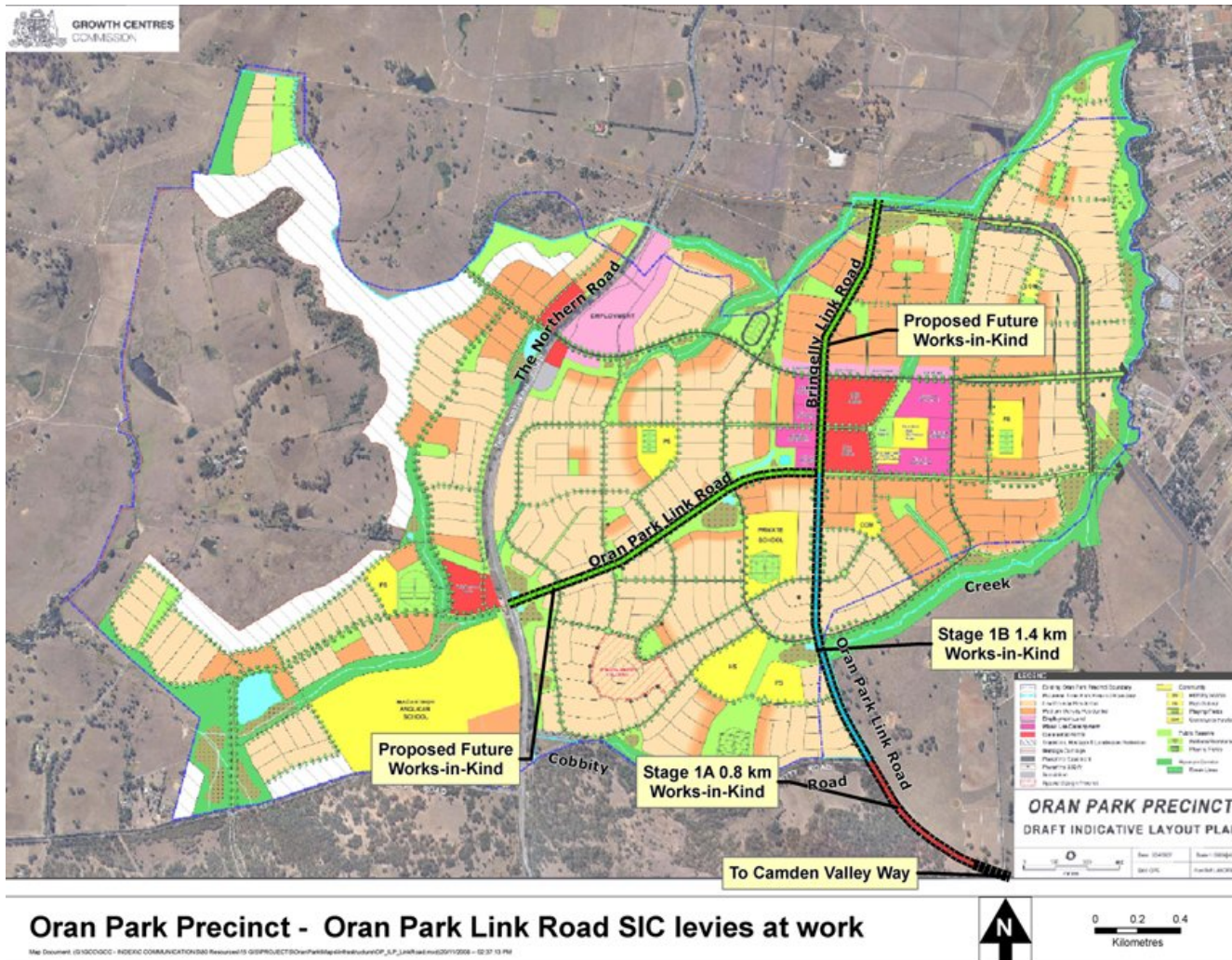
Oran Park Link Road

- **First 0.8km worth more than \$7 million; second 1.4 km around \$14 million**
- **Procured by two Special Infrastructure Contributions (SIC) Offsets Agreements**
- **First SIC-funded public infrastructure assets planned for the Growth Centres**



A new era in private funding and procurement of public assets in the Growth Centres

Oran Park Link Road



Oran Park Precinct - Oran Park Link Road SIC levies at work

Oran Park Link Road: Stage 1A



- ◆ An 0.8km section nearing completion and partially open to the public ◆
- ◆ View of work looking south from the Cobbity Road intersection ◆

Oran Park Link Road: Stage 1B



- ◆ Stage 1B, a 1.4km section ◆
- ◆ Looking south-east over the future wetlands ◆

Oran Park Link Road: Stage 1B



- ◆ Road creek crossing ◆
- ◆ Concrete culvert will form part of the proposed water quality wetlands nearby ◆

Oran Park Link Road: Stage 1B



- ◆ 'Boxed out' road, looking north towards Oran Park Town Centre ◆
- ◆ Potable water supply pipes stacked ready for installation ◆

Oran Park Link Road: Stage 1B



- ◆ Material excavated from the future display village will be used as fill under the future Bringelly Link Road ◆
- ◆ Stockpiled rock in the foreground will be used in landscaping throughout the site ◆